

Information, Short and Sweet



To ensure a newspaper production process that is technically smooth as well as economical, EAE Info collects and analyses information, analytical data, and statistics in an optimal way - a convenient messaging and logging system that collects, structures, and analyses your actual rotary press data.

The Messaging System

EAE Info stores all production-relevant and process-relevant rotary press information in a database and forwards it to each applicable point, e.g. control centre, Info workstation, PDA (personal digital assistant), or by email to a PC. The displays of the machine are visualised in clearly organised categories. EAE Info thus provides an overview of the current status of the rotary press at all times.

The messaging system is assigned to one printing section at a time and distinguishes among four different messaging classes:

- errors that prevent press start-up
- errors that automatically shut down the press
- warning messages, e.g. for an imminent error
- general information (events)



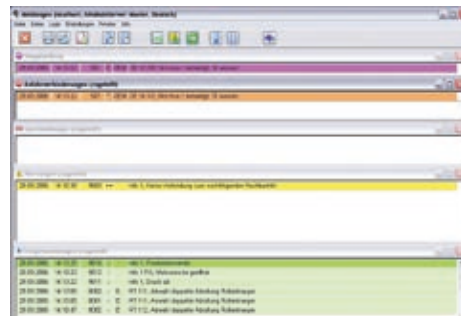
Your benefits:

- Minimisation of production downtimes by preventive alarm messages
- Increase of production reliability by possible alarm messages before malfunctions occur
- Comfortable operation by customised malfunction alarms and text messages
- Extensive production reporting for error detection and long-term diagnosis
- Standardised interfaces for Management Information Systems

Info uses preventive warning messages; for example, to give an early indication that an ink container will be empty within the next few minutes or that the water temperature is becoming critical, etc. This makes it possible to intervene before the actual error occurs.

Email, SMS, and other types of messages sent specifically to the responsible specialists enable them to be on-site to eliminate a malfunction within minutes.

of the rotary press - with the precision of a cutting blade.



Production data

Production number	080429	EAE Newspaper
Production date	29.04.2008	Ahrensburg
Date of issue	30.04.2008	Simulation
Number of copies	1	
Book structure	56(/ /16/8/16/ /16/)	
Copy weight	270,1 g	

Printing Unit	D11	D12	D13	D16
Reelstand	R11	R12	R13	R21
Color possibility	1/1-2	2/1-3	2/3-3	2/2-6
Web position	1111	0011	1111	1111
Reel width (mm)	1600,0	770,0	1540,0	1400,0
Paper manufacturer	Stora	Stora	Stora	Stora
Grammage (g/m²)	45,0	45,0	48,8	48,8

Partial web 1

Inlet	L10	2	3	4
Inlet level	1	L11	3	4
Turner code				
Outlet level	1	L11	3	4
Former level	top	top	top	top

Partial web 2

Inlet	L10	3
Inlet level	L11	4
Turner code	DC-BA	DC-BA
Outlet level	L11	4
Former level	top	top

In addition to these error messages, which are deliberately kept short, the EAE standard catalogue offers detailed help texts. The catalogue can also be customised to meet the specific needs of your company. As an added convenience, EAE Info makes it possible to classify and bundle messages, in particular error messages, for instance in mechanical, electrical, and other clearly classifiable message groups.

Selection of the Messages

Not all messages are generated automatically by EAE Info: Classic messages, such as "Last plate" or "Editorial makeover page" do not have to appear. In such cases, EAE Info permits you to create your own message texts, on the reliable basis of ready-made messages in the EAE catalogue.

Automatic Production Data Recording

EAE Info is the central point for the recording and forwarding of production data. EAE Info logs when which product was produced; how many copies, how fast, and how much wastage. EAE Info records the paper rolls used and the operating hours

Analysis of the Data

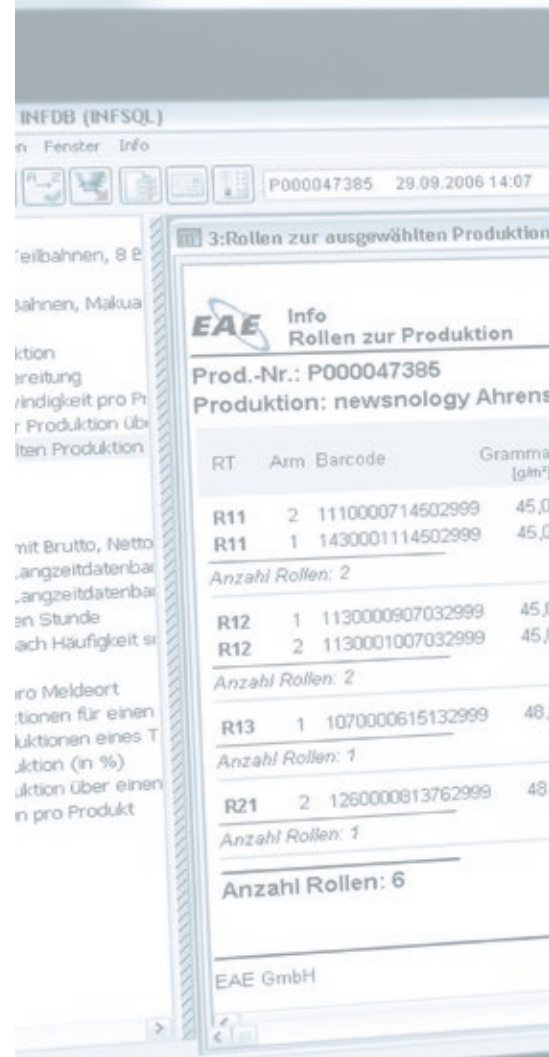
With EAE Info, the data recorded can be used not just as short term information; it can also be used for long-term diagnosis of recurring problems; such as repeated paper tears during particular production steps. This makes it possible to track down the causes of possible standard problems over the mid-to-long-term (e.g. using web break statistics).

Distribution Point

EAE Info is the central distribution point for rotary press data. EAE Info provides data on hours of operation to EAE LMS; informs EAE MaFlow of the status of production, the required roll widths, and paper types. EAE Info saves and transfers the complete database to the controlling system EAE V.I.P. Statistic and synchronises requirements with the production of the finishing department.

Remote Access

Via an Ethernet network, EAE Info also has remote access to data from any workstation in your printing house.



EAE Info Rollen zur Produktion

Prod.-Nr.: P000047385
 Produktion: newsology Ahrensburg

RT	Arm	Barcode	Gramma [g/m²]
R11	2	1110000714502999	45,0
R11	1	1430001114502999	45,0
Anzahl Rollen: 2			
R12	1	1130000907032999	45,0
R12	2	1130001007032999	45,0
Anzahl Rollen: 2			
R13	1	1070000615132999	48,0
Anzahl Rollen: 1			
R21	2	1260000813762999	48,0
Anzahl Rollen: 1			
Anzahl Rollen: 6			

EAE GmbH